



AAI

Asia and Africa Research & Consulting Investment



A-WING



**ORANGE
DENTAL**



PT. AWINA SINERGI INDONESIA

Member of A-Wing Group



AWINA

Sinergi International
BiOmagg
SUSTAINABLE PROTEIN



WATALA
Solar Hybrid IPP Developer

PT AWINA SINERGI INTERNATIONAL
COMPANY PROFILE

JAPAN • INDONESIA • BANGLADESH

Company Outline

Company Name : PT Awina Sinergi International (joint venture Japan and Indonesia)

Shareholder :

PT Awina Sinergi Indonesia (Indonesian Company) 33%

AAI Co. Ltd. (Japanese Company, Holding Company) 67%

Date of Establishment :

A-Wing International Co. Ltd. Representative Company 2010 May

PT Awina Sinergi Indonesia 2013 July 25th

PT Awina Sinergi International 2018 February 14th

Group Company : 5 Companies

Employees (Consolidated) : 100

Capital : 30.45 Billion Indonesian Rupiah

Main Business :

Renewable Energy (Wind、Solar、Hydro、Geothermal、Biomass)

Waste Management (organic waste、medical waste)

Health (dental clinic)

Food (agriculture、aquaculture)

M&A (consulting、research、investment、advisory)

Executive :

President Commissioner

Nakamura Hirohide

President Director

Ananda Setiyo Ivannanto

Managing Director

Hirayama Yuukichi

Our Background

*“A **Joint Venture** of **Japan-Indonesia** focusing on supporting **ESG** investments to achieve **SDGs goals**”*

- Having > **11 years** of excellent track records*
- Ranging from **renewable energy, environment, healthcare, and agriculture businesses***
- Expanding incrementally by **adding values** to support **ESG investments** in pursuing **SDG goals***

Our Aims

❑ **Vision:**

Becoming a leading force in driving forward SDGs through supporting ESG investments in Southeast Asia, and expanding to South Asia & East Africa

❑ **Mission:**

1. Becoming a prominent asset management player (for renewable energy projects) and producer & exporter of: biomass fuels, agricultural products, and new protein sources in Indonesia
2. Nurturing entrepreneurs related to ESG investments to achieve SDGs goals and be ready to face **Vulnerability, Uncertainty, Complexity, and Ambiguity**

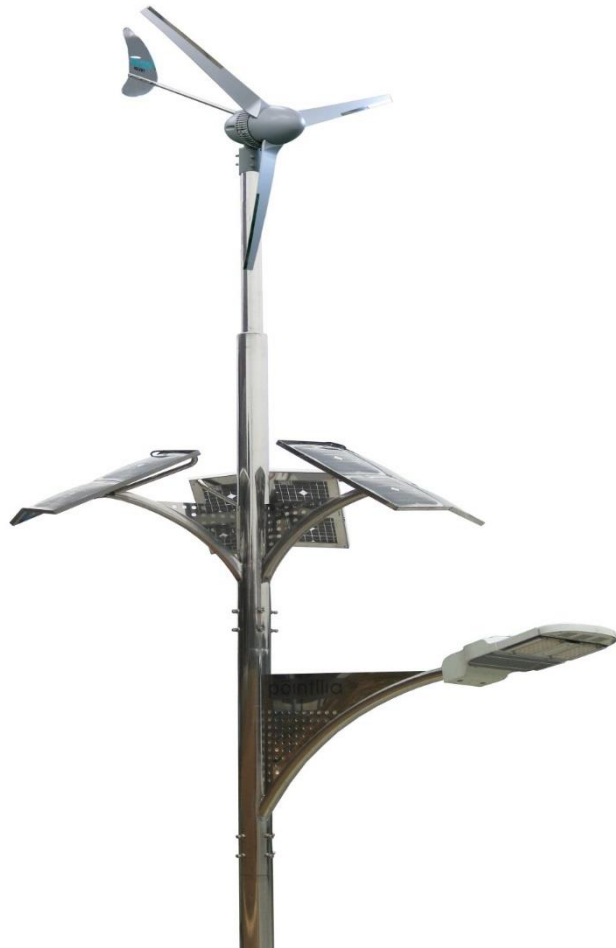
Our History (and Future)



It all started from this picture...

A-Wing Group Global Business Development Department Entrance Ceremony on 10 April 2010...
(15 countries: Japan, Indonesia, Bangladesh, Nepal, Thailand, Vietnam, China, India, Syria, South Korea, Mongolia, Nigeria, Germany, USA, Cameroon)

Our History (and Future)



A-Wing Low Wind Speed Wind Turbine's Core Strengths in a Competitive Market

Point 1. A-Wing has the ability to develop and manufacture an excellent wind turbine that efficiently produces energy in high and low wind speed conditions from 1,2 m/s.

Point 2. We hold our technology close at heart with an integrated manufacturing system where all research and development is done in-house.

Point 3. We maintain a Total Solution theory where we believe in not only harnessing natural energy resources to provide off-grid sites in developing countries with renewable energies, but also to reduce energy consumption as a whole.

Our History (and Future)

- 2007 **A-Wing International Co. Ltd.** has been established
- 2010 **New Japan Electric Power Co. Ltd.** has been established
A-Wing Group Indonesia (Representative Office) has been established
- 2011 **A-Wing Bangladesh** has been established
A-Wing Thai has been established
- 2012 **Asia Africa Research Consultant Investment (AAI) Co. Ltd.** has been established and becomes holding company
- 2013 **PT Awina Sinergi Indonesia (ASI)** has been established
- 2018 **PT Awina Sinergi International** (JV of AAI & ASI) has been established, acquired **GEC Bio Co. Ltd.**
- 2019 **A-Wing Bangladesh** becomes **A-Wing Taguchi Corporation Ltd.**
PT Biomagg Sinergi International has been established
 Invested in **PT Arya Watala Capital** (solar IPP), and **Orange Dental** (dental clinic chain)
- 2020 **Tokyo Office** re-open

Our Group



A-WING International Co., Ltd. (Japanese company)

- Established : 2007 (reincorporated in 2018)
- Core Business : Micro Wind Turbine manufacturing company
- Location : Japan



AAI (Asia Africa Research Consulting Investment) Co. Ltd. (Japanese company)

- Established : 2012
- Core Business : Investment holding, consultation
- Location : Japan



PT Awina Sinergi Indonesia (Japanese company)

- Established : 2013
- Core Business : A-Wing sole distributor, consulting
- Location : Indonesia

GEC BIO

GEC Bio Co., Ltd. (Japanese company)

- Established : 2017
- Core Business : Biomass R&D, semicarbonization, trading
- Location : Japan

Our Group



PT Awina Sinergi International (Indonesia-Japan Joint Venture)

- Established : 2018
- Core Business : Trading & investment in SDGs businesses
- Location : Indonesia



PT Arya Watala Capital (Indonesia-Japan Joint Venture)

- Established : 2009 (PT AWINA SINERGI INTERNATIONAL owned 45% since 2019)
- Core Business : Project developer (Solar IPP)
- Location : Indonesia



PT Biomagg Sinergi International (Indonesia-Japan Joint Venture)

- Established : 2019
- Core Business : R&D for Waste bioconversion
- Location : Indonesia



PT Rasea Awina Jakarta (Indonesia-Japan Joint Venture)

- Established : 2019
- Core Business : Dental clinic chain
- Location : Indonesia

Our Group

AAI

A-Wing Asset Investment, Co., Ltd. (Japanese Company)

- Established : 2019
- Core Business : M&A consulting, asset management
- Location : Japan



A-Wing Taguchi Co., Ltd. (Bangladesh-Japan Joint Venture)

- Established : 2020
- Core Business : Online logistic, microfinance, property development
- Location : Japan, Bangladesh & Indonesia

TBD

Company to be established in 2021 onwards:

- Solar PV rental
- Wood Pellet production and trading
- Palm Kernel Shell procurement and export
- High skilled migrant workers recruitment
- Salmon aquaculture
- Algaculture
- Mango export
- Smart Mobility

Our Offices

JAPAN

2F Jamu Building, 356-1, Torimachi,
Kurume City, Fukuoka 830-0018
T: +81 942 65 8847
F: +81 942 65 8857



INDONESIA

SME Tower, 6th Floor
Jl. Jend. Gatot Subroto
Kav. 94, South Jakarta 12780
T: +62 21 7989 457



Our Management



Hirohide Nakamura (Japanese)

Co-Founder: PT Awina Sinergi International

Chairman: A-Wing Group

Serial entrepreneur with almost 50 years experience, also was professional in various Japanese companies (including 7 years as Executive in a public listed company specialize in chemical material manufacturer) and 13 years investing in various business related to renewable energy and environment. Passionate to dedicate the remaining of his life for impactful social business that benefits many people.

Our Management



Ananda Setiyo Ivannanto (Indonesian)

Co-Founder & CEO of PT Awina Sinergi International & Director of A-Wing Group

Born in Pangkal Pinang, Bangka Belitung, on 13th October 1985. He has more than 11 years of experience and expertise in renewable energy, waste management, healthcare and M&A consultancy business. He established strong relationship with Japan for more than 16 years related to education, business, and social ventures, and becoming a one-stop solution between Indonesia and Japan including Government to Government partnership.

He is member in various professional organizations such as Indonesian Chambers of Commerce and Industry as member of Japan Committee, Indonesia Renewable Energy Society, Indonesia Young Entrepreneurs Association, and Japan Indonesia Kaizen Center. He was appointed as Oita Prefecture (Mejiron) Overseas Supporter, member of Expert Board of Habibie Alumni Association, and the Co-Founder of the Indonesian Overseas Alumni Network with more than 5000 Indonesia diaspora networks globally with various expertise.

He was selected as committee member, tutor, and speaker at distinguished International events such as Asian Youth Exchange Program in Okinawa 2008 and 2009, Indonesia Young Changemaker Summit 2012, APEC Summit 2013 in Bali, Indonesia Green Infrastructure Summit 2014 and 2015, Horasis Asia Meeting 2018 and 2019, Horasis Extraordinary Meeting 2020 and 2021, and Horasis Global Meeting in 2021.

In more than 11 years, with his leadership involvement, he grows A-Wing Group to become 11 companies under one group with more than 120 employees, operating in 3 countries in Japan, Indonesia and Bangladesh, including an ownership in an online media which is part of the largest entertainment group in Indonesia and member of Editor in Chief Forum. He is also actively involved in Global Content Library initiated by overseas alumnis from Japanese universities in partnership with the Japanese Government.

He has a Bachelor & Master Degree from Ritsumeikan Asia Pacific University, Japan with network of alumnis from 143 countries worldwide. He is married with one son.

Our Management



Appointed by Ministry of Foreign Affairs to assist Vice President of Indonesia and Vice Speaker of the House of Representatives and Transportation Minister to meet Japanese business delegation headed by Former Prime Minister of Japan Yasuo Fukuda

Our Management



bppt_ri • Following

melalui pesan instan dari Jepang, Selasa, (08/10/2019). Menurut Hammam, Indonesia dapat meniru Jepang dalam melakukan gebrakan pada bidang teknologi. "Jepang kita kenal, sudah lama maju. Produk mereka bahkan mampu bersaing dengan negara di Amerika dan Eropa. Jadi apa yang dilakukan Jepang ini, juga kita bisa jadikan contoh untuk diterap di negara kita," tegas Hammam.

Liked by ptip.bppt and 303 others

OCTOBER 8, 2019

Add a comment... Post

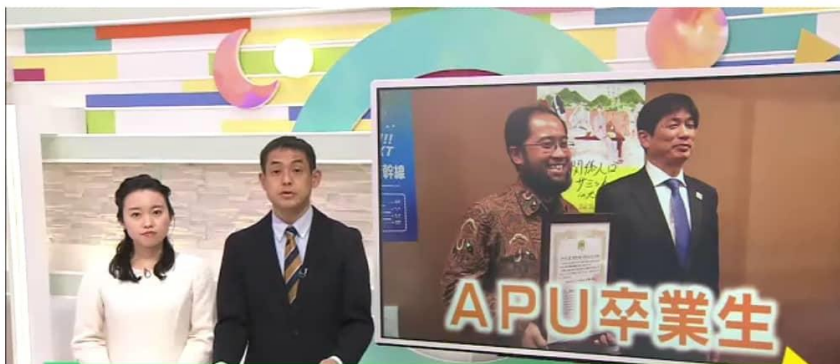
Signed Memorandum of Understanding with Kyuden Mirai Energy and Agency for Assessment and Application of Technology for Renewable Energy technology cooperation

Our Management



A P U 卒業生が県のサポーターに

01月22日 16時51分



NEWS · 26 Januari 2020 12:36

Pertama Kali, Jepang Tunjuk WNI sebagai Duta Luar Negeri Oita

Konten ini diproduksi oleh kumparan



Appointed as the first Indonesian to be Oita Prefecture Overseas Supporter

Our Management



Masaki Tani (Japanese)

Advisor: A-Wing Group

Former Japanese career diplomat, working for the Japanese Ministry of Foreign Affairs for more than 40 years with 19 years spent in Indonesia. His last post in Indonesia was Consul General in Surabaya, and previously Consul in Makassar and Information and Culture Director in Embassy of Japan.



Siti Badriyah (Indonesian)

Director: PT Awina Sinergi International

Formerly a health care and climate change professional for 8 years in local and international organizations. Driven and passionate for environmental and social impacts. She has a Bachelor Degree from University of Indonesia, Indonesia.

Our Businesses



Sustainable Energy



Sustainable Protein



Sustainable Fertilizer



Sustainable Commodity



Sustainable Health



Sustainable Financing



Our Projects



Renewable energy : > 1,500 projects



New protein sources : > 2 assets
> 10 projects



New fertilizer sources : > 2 assets
> 10 projects

Commodity trading : > 10 projects

Dental & health : > 4 assets

Project investment : > 10 projects



Our References

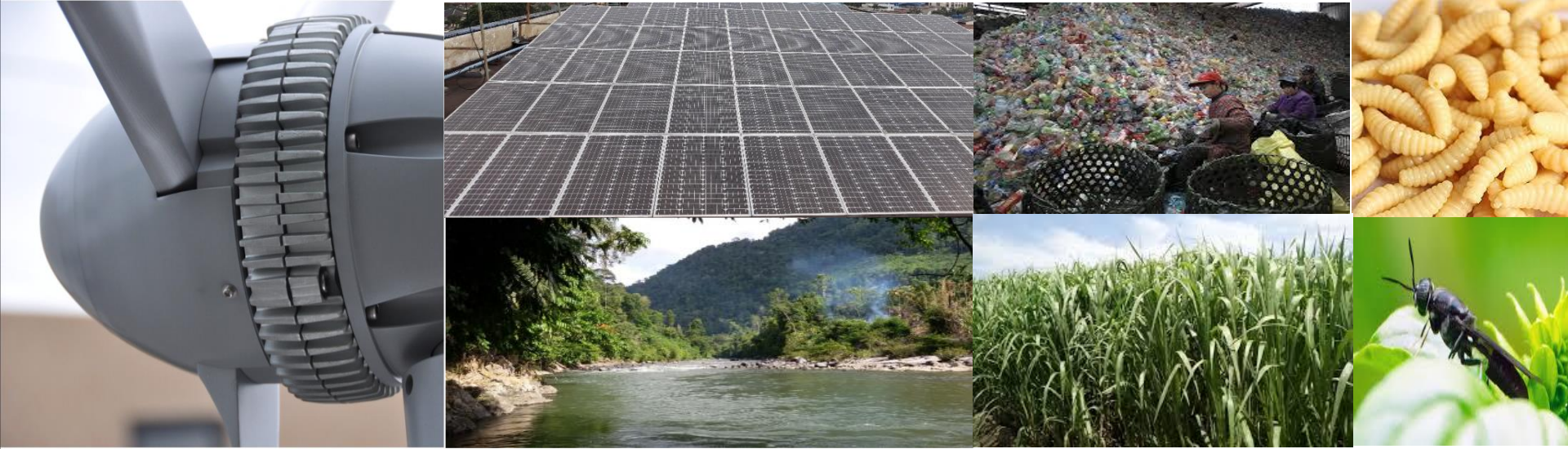


Our References



Our Partners





AAI

Asia and Africa Research & Consulting Investment



A-WING



**ORANGE
DENTAL**



PT. AWINA SINERGI INDONESIA

Member of A-Wing Group



**PT AWINA SINERGI
INTERNATIONAL**

Sinergi International
BiOmagg
SUSTAINABLE PROTEIN



WATALA
Solar Hybrid IPP Developer

PT AWINA SINERGI INTERNATIONAL:

RENEWABLE ENERGY EXPERIENCE

Consulting Works

☐ **Consultant for Renewable Energy IPP, Leasing, and JCM (2012 – now)**

➤ **Clients:**

Itochu Corporation, Marubeni, IHI, Kyushu Electric Power, Hokuriku Electric Power, Kansai Electric Power, JPower, Panasonic, Fuji Furukawa E & C, Scatec Solar, BayWa, Symbior Solar, Enfinity, JAG Energy, Prime Road Group, IDI Infra, Asian Energy Investments, Asian Capital Alliance, Shizen Energy, LOOOP, Sumitomo Mitsui Finance Leasing, Hitachi Zosen, Sinanen, Chubu Electric Power, BP Lightsource, Shin Nihon Consultant, Renova, Unicharm

☐ **Consultant for Biomass Fuel Trading (2014 – now)**

➤ **Clients:**

Itochu Corporation, Hanwa Kogyo, Erex, Japan Pulp and Paper, Mitsui, JAG Energy, Kyuden Mirai Energy, Sumitomo Forestry, Sumitomo Corporation, JFE Shoji, Kanematsu, Renova

☐ **Consultant for Business Matching (2010 – now)**

➤ **Clients:**

JETRO, Dentsu, PwC Japan, Industrial Marketing Consultants, Yamada Consulting Group, ASEAN Nagoya Club, ASEAN-Japan Centre, Mizuho Bank, Hiroshima Prefecture, Oita Prefecture

EPC Works

- Hybrid Wind & Solar for Water Treatment in Chittagong, Bangladesh (2010-2011)**
 - Project Value: JPY 50 million
 - Funded by JICA

- Hybrid Wind & Solar for Water Treatment in East Lombok, Indonesia (2014)**
 - Project Value: IDR 700 million
 - Funded by Mitsui Co. Ltd.

- Hybrid Wind & Solar for Lighting and Education in West Lombok, Indonesia (2017)**
 - Project Value: IDR 665 million
 - Funded by Millennium Challenge Account (MCA)-Indonesia (US Government Grant)

- 1,4 MW Solar PV Rooftop for Asian Games 2018 (2018)**
 - Project Value: IDR 40 billion
 - Funded by Ministry of Public Works and Housing

Solar PV Project: Asian Games 2018



Small Wind Project: Indonesia & Worldwide



BUNDRAN HOTEL INDONESIA



COOPERATION WITH LIPI



PRIVATE HOUSE (CIKEAS)



LOCAL CONTENT



MONGOLIA



FAUZAN ISLAMIC SCHOOL (GARUT)

Project Development: Pertamina

❑ **Micro Wind Turbine – 2013~**

- **Implementation of localized Micro Wind Turbine in East Sumba**
 - Collaboration with IBEKA and Lentera Angin Nusantara

❑ **Motor for Electric Vehicle – 2017~**

- **Development of motor for electric vehicle**
 - Collaboration with Shicoh and Panasonic (Japan)

❑ **LNG Export to China – 2018~**

- **LNG export 24 million ton per annum to China**
 - Collaboration with Sinanen (Japan)

❑ **Gas for Refinery Development Master Plan – 2019~**

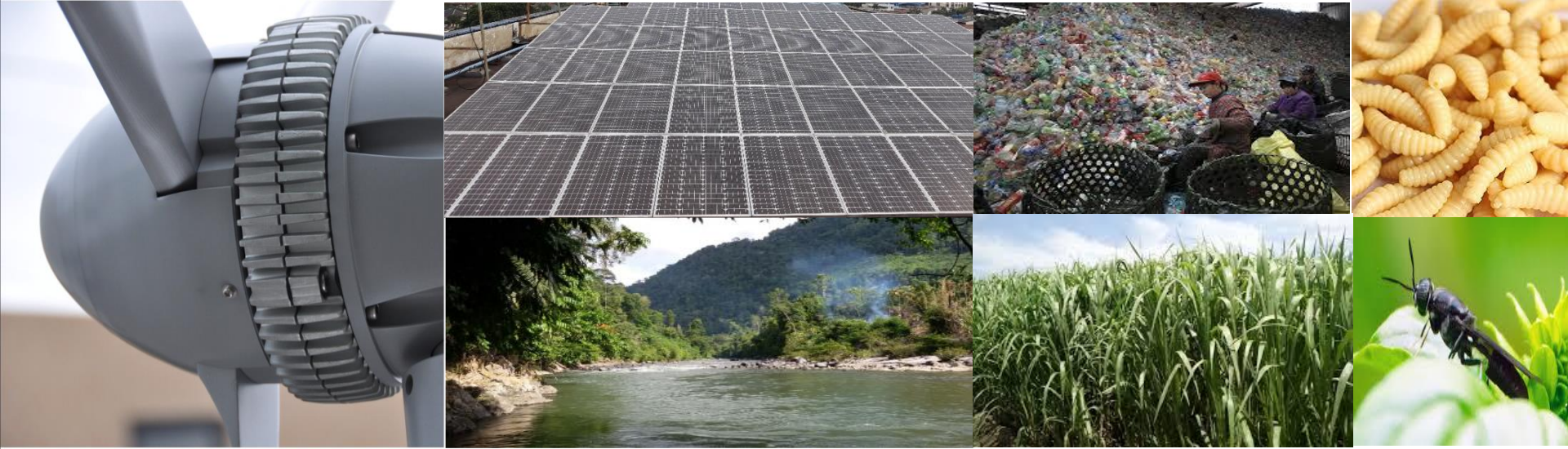
- **Providing LNG for RU IV (Cilacap), V (Balikpapan), and VI (Balongan) total 569 mmscfd**
 - Collaboration with PT Terra Global Vestal and Japanese electricity and gas company

❑ **Nano Glycerin Development – 2019~**

- **Production of nanoglycerin fuel mixing diesel fuel with glycerin and fuel additive**
 - Collaboration with Nanofuel (Japan), BPPT, Ministry of SoE, and PTPN

❑ **Ammonia and Hydrogen Fuel – 2021~**

- **Development of ammonia and hydrogen (blue and green)**
 - Collaboration with Kyushu Electric, Kyudenko, Purnomo Yusgiantoro Center, and Tokyo University



AAI

Asia and Africa Research & Consulting Investment



A-WING



**ORANGE
DENTAL**



PT. AWINA SINERGI INDONESIA

Member of A-Wing Group



**PT AWINA SINERGI
INTERNATIONAL**

Sinergi International
BiOmagg
SUSTAINABLE PROTEIN



WATALA
Solar Hybrid IPP Developer

PT AWINA SINERGI INTERNATIONAL:

WASTE MANAGEMENT EXPERIENCE

Consulting Works

- Microalgae for Liquid Waste Utilization (2010 – now)**
 - Clients: PTPN 7, Surya University, NASA & SMA Del, Prasetya Mulya, etc.

- Maggot's Black Soldier Fly for Organic Wastes (2015 – now)**
 - Clients: Media Group, Pizza Hut, Hoka Hoka Bento, Unicharm, etc.

- Palm Kernel Shell & Empty Fruit Bunch for Coal Replacement (2014 – now)**
 - Clients: PTPN 3, Kyuden Mirai (Kyushu Electric), etc.

- Organic Wastes for Coal Replacement (2018 – now)**
 - Clients: Klungkung Government, PLN NTT, PLN NTB, etc.

- High Free Fatty Acid & Glycerin for Synthetic Diesel Fuel (2019 – now)**
 - Clients: Nanofuel, PTPN 3, Pertamina, BPPT, etc.

Feasibility Study Works

Client	Ministry of Economy, Trade and Industry of Japan
Period	2015
Project	Feasibility Study for Empty Fruit Bunch (EFB) in Indonesia
Detail	Market research on palm residue : Empty Fruit Bunch (EFB) raw material potential to convert to biomass fuel using semi carbonization technology.

Client	Resources Co., Ltd
Period	2015
Project	Feasibility study of waste management business in Indonesia
Detail	Feasibility study for potential waste management business in Indonesia e.g medical waste (technology using incinerator), traditional market waste and household waste (waste management and organic waste management), etc.

Feasibility Study Works

Client	Itochu Corporation
Period	2015 and 2017
Project	Feasibility Study of Biomass business potential (Palm Kernel Shells) in Kutai Kartanegara, East Kalimantan
Detail	Feasibility study for raw material (price, location, etc), survey stockpile location and cooperation joint venture with Kutai Kartanegara Government to export to Japan

Client	Japan Coal Development Co.,Ltd.
Period	2016
Project	Feasibility study for Coal Business
Detail	Research work for the coal business, market and cooperation with Salim Group

Feasibility Study Works

Client	Hokuriku Electrical Power Company Co., Ltd
Period	2018
Project	Feasibility Study regarding IPP business for hydro power
Detail	Feasibility Study regarding IPP potential business for hydro power, survey location for hydro power and cooperation and business scheme with local partner.

Client	Kyuden Mirai Energy Inc.
Period	2019 and 2021
Project	Feasibility study for production of Wood Pellet in Central Java and West Kalimantan
Detail	Investigation of biomass fuel (wood pellet) overall business. Survey raw material, plantation, lab test, factory, and scheme business to cooperation with local partner etc to produce wood pellet and export to Japan.

Feasibility Study Works

Client	PT Uni-Charm Indonesia Tbk
Period	2020
Project	Feasibility Study for Waste Management
Detail	SDGs Waste Management Solution and Waste Separation Education System collaboration with Ministry of Education of the Republic of Indonesia and Ministry of Environment and Forestry of the Republic of Indonesia

Client	Dentsu Inc and Ministry of Economy, Trade and Industry of Japan
Period	2021
Project	Development of EV Zone, Smart Mobility and Transit Development for Sustainable Smart City in Bali
Detail	Feasibility study for potential and market for EV zone, smart mobility and transit development in Sanur Bali cooperate with Bali government

Feasibility Study Works

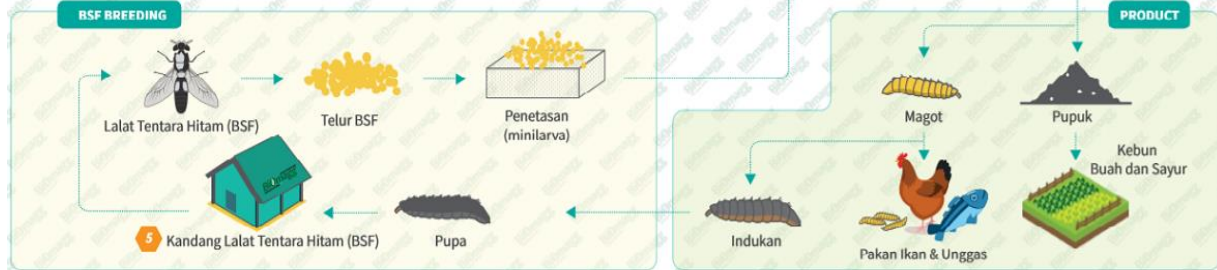
Client	Kowa Company
Period	2021
Project	High FFA and glycerine utilization for synthetic diesel fuel
Detail	Feasibility study for high FFA and crude glycerine raw material potential for utilization of synthetic/ biodiesel fuel using nano technology (in collaboration with BPPT)

Client	Riken, Euglena, University Padjadjaran, Bandung Institute of Technology, National Research Innovation Agency, Jawa Power
Period	2023
Project	Feasibility study and pilot project from micro alga for food and fuel
Detail	Utilization of CO2 emission from Jawa Power coal fire powerplant to produce food product and fuel product using microalgae and also implement carbon looping for circular economy

Feasibility Study Works

Client	Yayasan WWF Indonesia
Period	2023
Project	Bidding Vendor Mapping the Availability of Solid Biomass from Waste for Steam Boiler Fuel
Detail	Feasibility Study for Mapping the Availability of Solid Biomass from Waste for Steam Boiler Fuel in Sumatera, Jawa and Kalimantan

Maggot BSF Project: KKP & Komplek Koperasi Depok



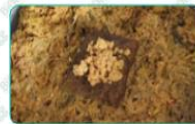
Controlled

Chemical Fertilizer

Organic Fertilizer (10%)



Tempat Bertelur
Kayu ini disiapkan sebagai tempat bertelur Lalat Tentara Hitam (BSF)



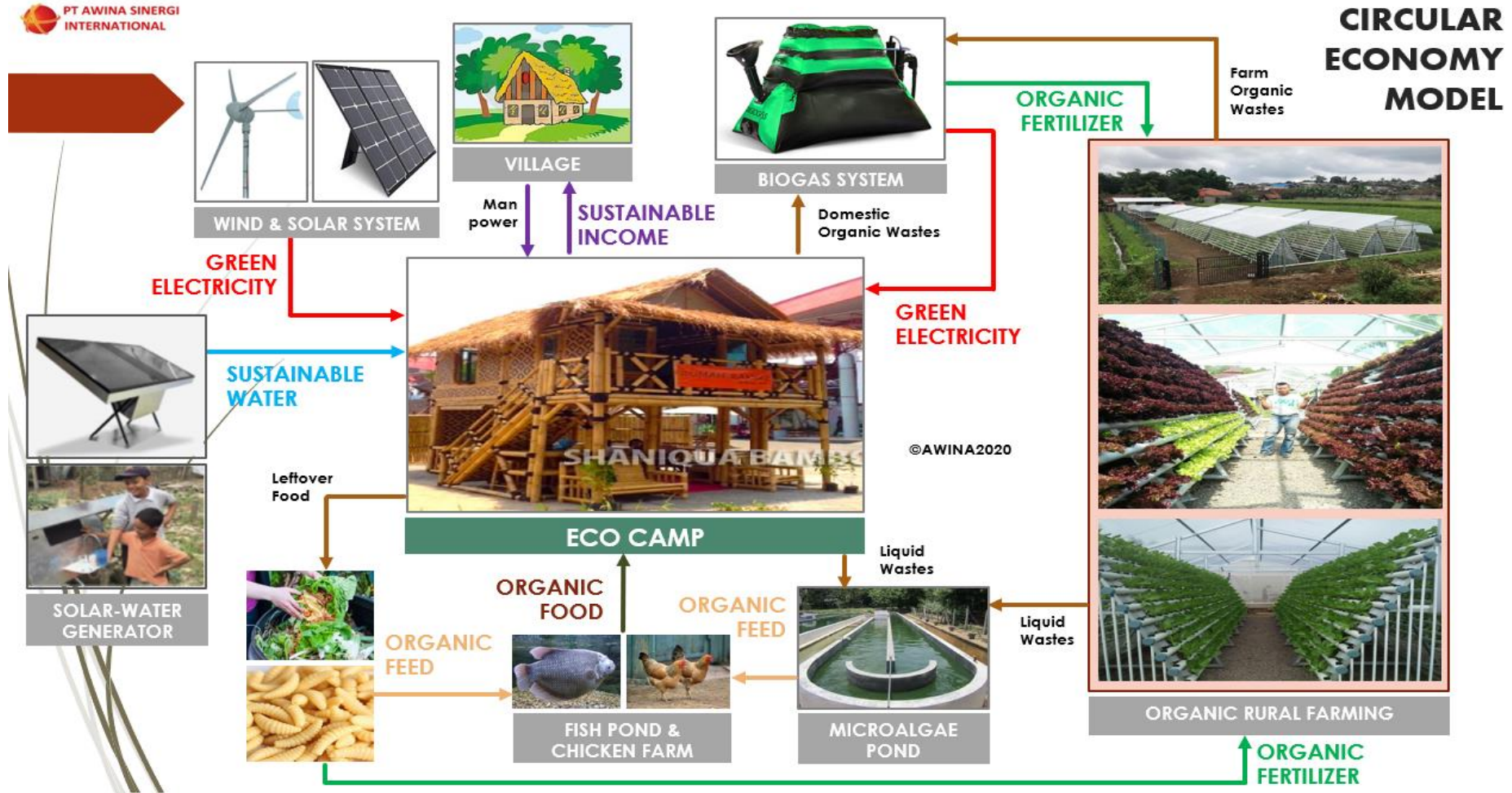
Jaring Penetasan
Jaring ini digunakan untuk meletakkan telur yang siap untuk ditetaskan



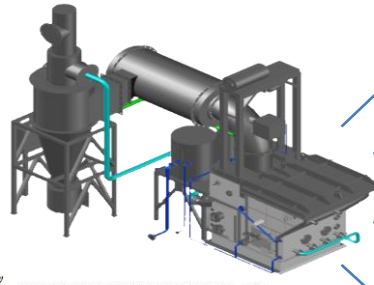
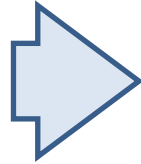
Tray
Tray ini digunakan untuk tempat penetasan telur



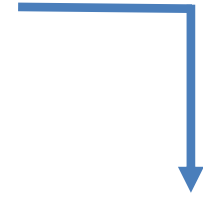
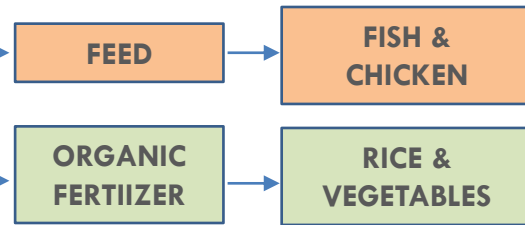
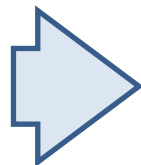
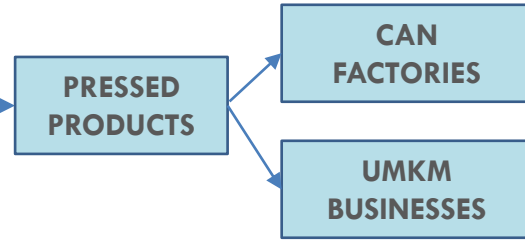
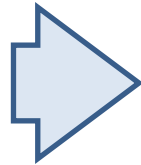
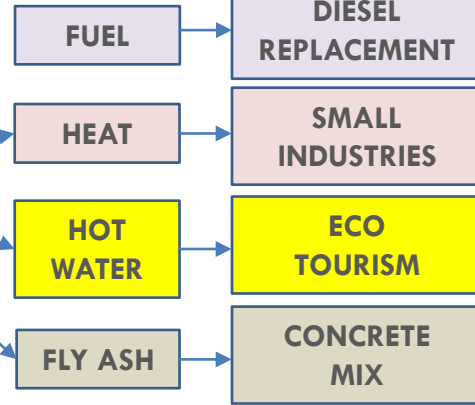
SDGs Center



Marine Waste



INDOPOWER INTERNATIONAL, PT
Advanced Power Plant Engineering

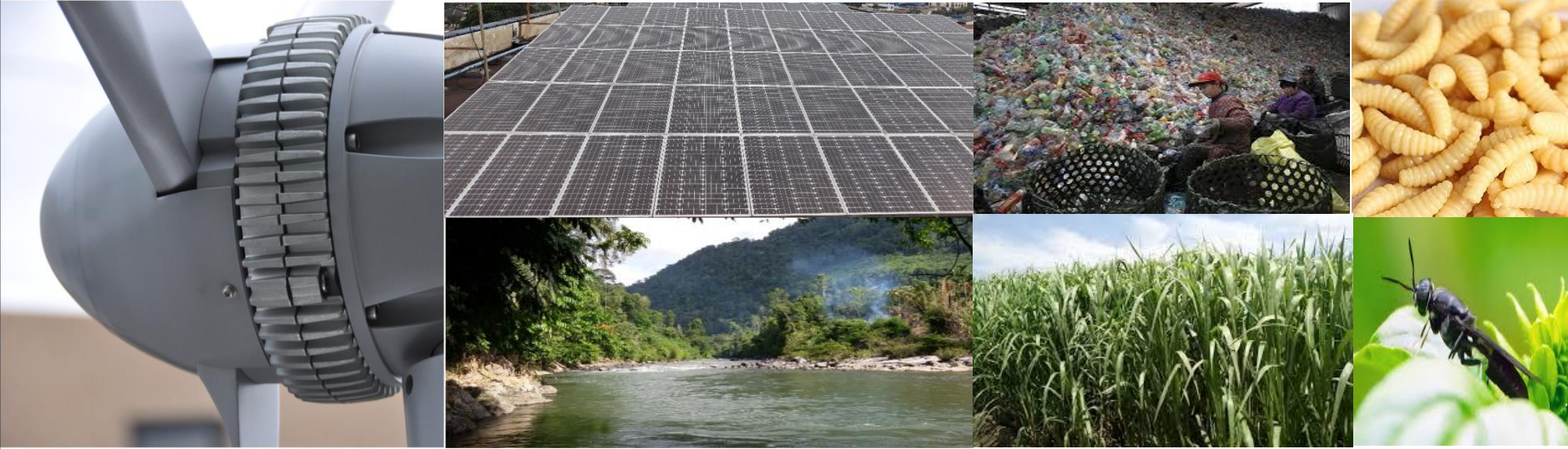


Our Strengths

- ❑ More than 11 years experience focusing on renewable energy business from the start, which majority of the players have less than 5 years and came from other business or new to Indonesia
- ❑ Strong network with Japanese investors, technology owners, and general trading companies, which covers all the supply chain in renewable energy and environment business
- ❑ More than 50 renewable projects total more than 1,8 GW (solar, wind, hydro, biomass, and geothermal) and large-scale biomass wood pellet factory in the pipeline for fundraising
- ❑ Strong connection to strategic ministries such as Energy and Mineral Resources, State Own Enterprise, Agriculture, Environmental and Forestry, Ocean and Fisheries, Maritime Affairs, Economic Affairs
- ❑ Strong partnerships with local government such as North Sumatra, West Sumatra, DKI Jakarta, West Java, East Java, South Sulawesi, East Nusa Tenggara, also Regent Government Association
- ❑ Established overseas markets for business expansion such as in Bangladesh, Ethiopia, Philippines, Vietnam, Malaysia, and Singapore
- ❑ Have a professional and lean team

What are we looking for?

- Companies interested to invest in Indonesia, Bangladesh, and Japan
- Companies looking for suppliers and buyers from Indonesia, Japan, and Bangladesh
- Indonesian companies interested to expand overseas
- Companies interested with ESG investments or SDGs goals
- Companies looking for short- and long-term investments
- Regional governments who wants to have more international exposures and collaboration
- Not the above? No worries, just contact us, we might have the skills and network to help you!



Arigatou gozaimashita
Email: ivan@awina.co.id

*Integrated Sustainable
 Solutions for a Better World!!*